

Daily Nifty Observer

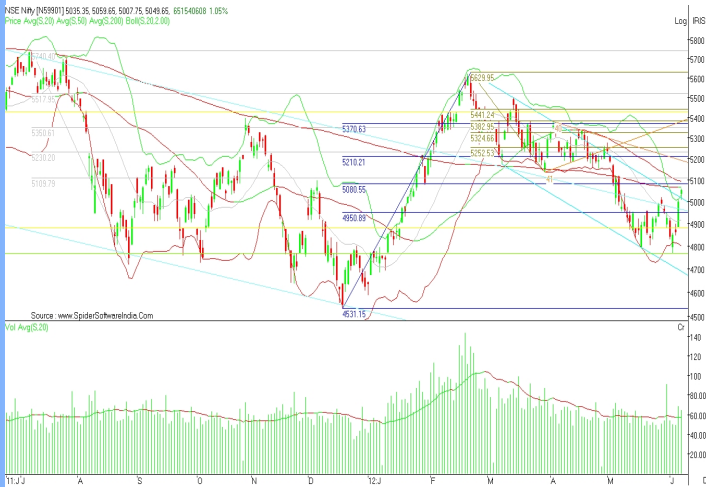
Issue - 678

June 08, 2012

Nifty Outlook

....5000 levels will be very crucial level for friday with 5067 levels as intraday resistance....

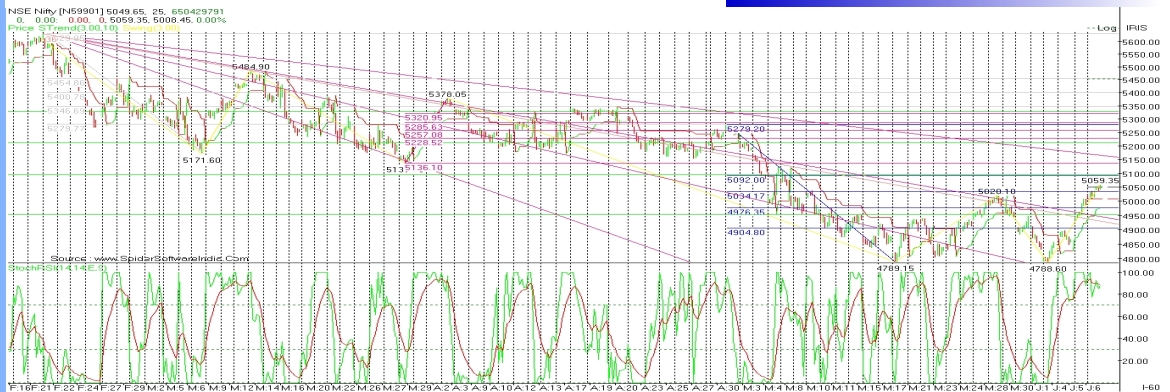
Spot Nifty Daily Chart Analysis



Spot Nifty closed at 5049.65 up 1.05 % after up trending trading session with fall in volume which was above its 20 period SMA. It made a high of 5059.65 and low of 5007.75 levels in intraday. Nifty closed above its 20 period, below its 50 period and even below its 200 period SMA. SHORT TERM TREND WILL REMAIN BEARISH AS NIFTY CLOSED BELOW ITS 200 DAYS SMA ON MONDAY (07/05/2012). Momentum oscillator is indicating that Nifty is trading around its over sold zone on intraday chart.

Short to mid term bull phase will confirm after sustainability above 5067 levels. For friday 5000 levels will be very crucial. If Nifty manages to close above it tomorrow, it will increase probability for 5250/5320 levels next week.

60 Minute Chart Analysis



14 days Schotestic RSI (60 minutes chart) closed at 88.02 levels & traded across its 9 period EMA for whole of the trading session and managed to close below it. On friday it may try to come below its 9 period EMA levels allowing Nifty to trade below 5080/5090 levels.

With a gap up opening, Nifty tested 5050 levels but failed sustain above it. Also it failed to fill up the intraday gap. For friday, sustainability above 5000 levels will be very crucial for days to come. For intraday 5067 levels will be immediate resistance while 4980 levels as intraday support below 5000 levels.

240 Minute Chart Analysis



After 3 day for Nifty in bear zone, since two days it moved in bull zone and closed above Super Trend, over 240 minutes Heikin Candle.

Today Nifty closed above 5000 levels.

Nifty for 2nd day closed above its 3rd speed line and moved towards 4th speed line on intraday. Speed line is drawn from the high of 5629.95 (22/02/12) and low of 5136.10 (29/03/12).

In next few 240 minute Heikin candle Nifty have to give closing above 3rd speed line to move towards 4th speed line (around 5150 levels). If it continues closing below 3rd speed line then it will increase probability to slide towards 2nd speed line (around 4800 levels).

Note on Nifty Intraday Price,OI & Volume (07/06/2012)

On thursday rise in Nifty (1.05 %) was registered with fall in Nifty June 12 futures open position (1.35 %) and fall in Nifty spot intraday volume (5.59 %).

Nifty rise with fall in OI and volume suggesting that the market is running out of traders willing to open or hold an open long. Trades are liquidating both losing short position and closing winning long positions. A higher probability the market is set to retrace in price lower at some point forward.

Current rise of 1.05 % in Nifty was due to short covering in Nifty June 12 series.

For friday, 5000 levels will be trend setting levels for next week. If nifty manages to trade above it on friday it will be indicative for more up move towards 5250 levels for next week.

Support

5020/4990/4970

Resistance

5050/5070/5090

Market Strength Indicators

14 days RSI - Up by 4.13 points at 56.06 levels

14 days SchRSI - Unchanged at 100 levels

Stochastic - Up by 24.16 points at 80.8 levels

TSI - Up by 3.27 points

Market Intensity Indicator

NFP - At discount of 20.3 from discount of 18.5 earlier

Advance - 846

Decline - 585

Volatility - Down by 0.02 points at 0.19 levels from previous

Moving Average Indicator

20 days SMA - 4914.70

50 days SMA - 5092.43

200 days SMA - 5056.07

Bollinger Band - Trading around Upper Band

Other Indicators

FII's Spot - Positive

DII's Spot - Negative

F&O - Positive

Stocks Corner

Fresh Long

DELTA CORP	INDIAINFO	POLARIS	REL CAPITAL	TTK PRESTIG	
RENUKA	BAJAJHIND	ONMOBILE	HINDOILEXPZEEL	VOLTAS	
STER	SUZLON	AXIS BANK	JPASSOCIAT JSWSTEEL	HDIL	
HDFC BANK	SKUMARSYNF	GESHIP	DLF	SESAGOA	
BEL	PUNJLLOYD	PAATELENG	SREINFRA	RELINFRA	ICICIBANK
IBREALEST	CAIRN	IFCI	CHAMBLFERT	INDUSINDBK	
RPOWER	EXIDEIND	TATAMTRDVR	M&M		
PANTALOONR	YES BANK	MRPL	STRTECH	ROLTA	
CENTURYTEX	VIPIND	TTML	JISLJALEQS	HEX AWARE	
OFS	BHUSANSTL	GVKPIL	INFY	NTPC	RCOM
JSW ENERGY	SOBHA	RAYMOND	DIVISLAB	TATAGLOBAL	
ONGC	JUBLFOOD	OPTOCIRCUITFORTIS	RELIANCE	SUN PHARMA	
MTNL	BAJAJHLDNG	IOB	TATASTEEL	GLAXO	
BAJAJ-AUTO					

Long Liquidation

TATACOFFEE	INDIANB	OIL	INDHOTEL	FEDERALBNK	
NMDC	ADANIEN	ACC	CIPLA	DCB	KOTAK BANK
JPOWER	VIDEOIND	TECHM	MCLEODRUSS	LICHSGFIN	
GODREJIND	NHPC	HCLTECH	BOSCHLTD	IGL	LUPIN
PIRHEALTH	KTK BANK	APOLLOTYRE		ULTRACEMCO	
BPL	GUJFLUORO	CUMMINSIND		ABGSHIP	TCS
GRASIM	WELCORP	ORIENT BANK		AMBUJACEM	
TITAN	DABUR	GSPL	JSWISPAT	RANBAXY	POWERGRID
SOUTH BANK	BHARATFORG	PETRONET	IRB	TATACOMM	

Short Covering

IVRCLINFRA	BALRAMCHIN	NCC	CROMPGREAV		
MARUTI	MCDOWELL-N	PFC	BOMDYEING UNION BANK		
ASHOKLEY	HEROMOTOCO	CENTRALBK	BATAINDIA	SINTEX	
EDUCOMP	BANKNIFTY	JINDALSTEL	BFUTILITIE	TATAPOWER	
COREEEDUTEC	BANKINDIA	JETAIRWAYS	LITL		
ORCHIDCHEM	BHARTIARTL	PTC	UNITECH		
IDEA	BHEL	RECLTD	CNXINFRA	ESSAROIL	SCI
NIFTY	DISHTV	ABAN	COALINDIA	SRTRANSFIN	
NFTYMCAP50	TATACHEM	ADANIPOWER	UCOBANK		
IDFC	PAJIND	HDFC	MAX	HINDUNILVR	
TATAMOTORS	ARVIND	CEC	BGRENERGYRUCHISOYA		
ALOKTEXT	VJAYABANK	SUNTV	AUROPHARMA		
ITC	ADANI PORTS	ABB	GMRINFRA	LT	
ASIANPAINT	ALBK	FINANTECH	COLPAL	MPHASIS	IDBI
MRF	SIEMENS	ESCORTS	SBIN	CNXPSE	CNXIT
JINDALSAW	SAIL	HAVELLS	HCC	SYNDIBANK	CANBK
BRFL	BIOCON	APIL	DRREDDY	GMDCLTD	DENABANK
BANKBARODA					

Fresh Short

HINDZINC	INDIACEM	PNB	HINDALCO	ANDHIRABANK	
BEML	UNIPIOS	NAGAROIL	TVSMOTOR	ABIRLANUVO	IOC
HINDPETRO	GAIL	WIPRO			

Performance Corner

Daily Calls Monitor

[Buy Sesa Goa @ 180/179 sl 177 tgt 183/184](#)
[Buy tata steel @ 406/408 sl 403 tgt 412](#)
[Buy Nifty June 12 future @ 4943/4950 \(spot\) sl 4920 tgt 4970/4994](#)
[Buy Bank Nifty June 12 future @ 9555/9575 sl 9450 tgt 9690/9750](#)
[Buy ICICI Bank @ 802/804 sl 795 tgt 814](#)
[Buy Jindalsteel @ 429/430 sl 425 tgt 435/440](#)
[Buy Jubilant food @ 1070/1080 sl 1055 tgt 1210/1237](#)
[Buy SBI @ 2120/2127 sl 2105 tgt 2154/2170](#)
[Buy LT @ 1235/1240 sl 1220 tgt 1270/1287](#)
[Buy Reliance @ 707/709 sl 701 tgt 717/724](#)
[Buy Nifty June 12 future again @ 4977/4985 sl 4950 tgt 5020; 2nd tgt in earlier intraday buy call in nifty achieved](#)

[Buy Silver 55050/55150 sl 54700 tgt 55700/55900](#)
[Buy Copper June 12 future @ 410/411 sl 407.90 tgt 414.50/417.00](#)
[Buy Crude June 12 future @ 4740/4747 sl 4720 tgt 4777; sl triggered in crude intraday buy call](#)
[Buy Gold August 12 future in the range of 30190/30240 sl 30110 tgt 30400/30520](#)
[May buy silver July 12 future again @ 55700/55800 sl 55300 tgt 56200/56450; 2nd tgt of earlier intraday buy call in silver achieved](#)
[May buy crude June 12 future again @ 4715/4723 sl 4697 tgt 4750/4777; sl of earlier intraday buy call in crude triggered](#)

Analyst Certificate & Disclaimer

DISCLAIMER: The document is not for public distribution and has been furnished solely for information and must not be reproduced or redistributed to others. Opinion expressed is the current opinion as of the date appearing on the material only. Further, the information in the document has been printed on the basis of publicly available information; internal data and other reliable sources believed to be true and are for general guidance only but which may not be verified independently. While every effort is made to ensure the accuracy and completeness of information contained, the company takes no guarantee and assumes no liability for any errors or omissions of the information. No one can use the information as the basis for any claim, demand or cause of action. All investment information and opinion are subject to change without notice. Recipients of this material should rely on their own investigations and take their own professional advice. Each recipient of this document should make such investigations as it deems necessary to arrive at an independent evaluation of an investment in the securities of companies referred to in this document (including the merits and risks involved), and should consult their own advisors to determine the merits and risks of such an investment. This material is for personal information and none is responsible for any loss incurred based upon it. The investments discussed or recommended in this report may not be suitable for all investors. It should not be considered to be or taken as an offer to sell or a solicitation to buy/sell any security. Price and value of the investments referred to in this material may go up or down. Past performance is not a guide for future performance. Certain transactions - futures, options and other derivatives as well as non-investment grade securities - involve substantial risks and are not suitable for all investors. Reports based on technical analysis centers on studying charts of a stock's price movement and trading volume, as opposed to focusing on a company's fundamentals and as such, may not match with a report on company's fundamentals. Analyst who has issued this report, may, on the date of this report, and from time to time, have long or short positions in, and buy or sell the securities of the companies mentioned herein or engage in any other transaction involving such securities and earn brokerage or compensation or act as advisor or have other potential conflict of interest with respect to company/ies mentioned herein or inconsistent with any recommendation and related information and opinions.