

Daily Nifty Observer

Issue - 666

May 23, 2012

Nifty Outlook

.....nifty may try to move above 4900 levels on wednesday with 4840/4810 levels as strong support zone for intraday.....

Support

4840/4810/4790

Resistance

4870/4890/4910

Market Strength Indicators

14 days RSI - Down by 2.87 points at 31.01 levels

14 days SchRSI - Down by 9.33 points at 19.76 levels

Stochastic - Up by 4.65 points at 53.36 levels

TSI - Down by 0.73 points

Market Intensity Indicator

NFP - At discount of 19.3 from discount of 12.15 earlier

Advance - 545

Decline - 884

Volatility - Down by 0.03 points at 0.12 levels from previous

Moving Average Indicator

20 days SMA - 5038.68

50 days SMA - 5185.52

200 days SMA - 5079.45

Bollinger Band - Around Lower Band

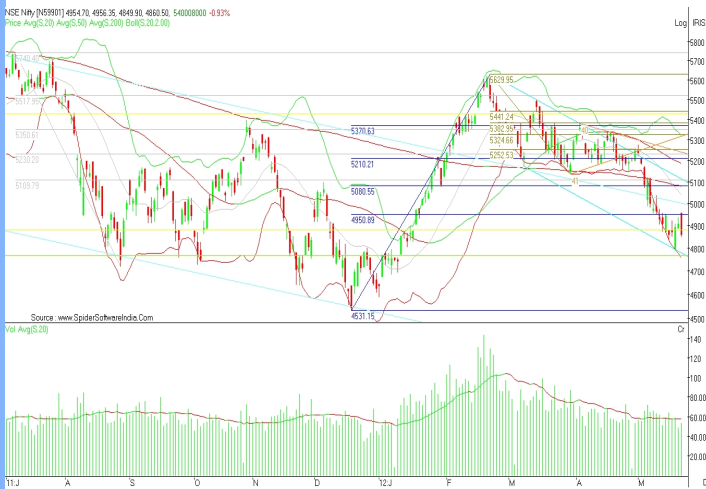
Other Indicators

FII's Spot - Negative

DII's Spot - Positive

F&O - Positive

Spot Nifty Daily Chart Analysis



Spot Nifty closed at 4860.50 down 0.93 % after down trending trading session with rise in volume which was below its 20 period SMA. It made a high of 4956.35 and low of 4849.90 levels in intraday. Nifty closed below its 20 period, below its 50 periods and even below its 200 periods SMA. SHORT TERM TREND WILL REMAIN BEARISH AS NIFTY CLOSED BELOW ITS 200 DAYS SMA ON MONDAY (07/05/2012). Momentum oscillator is indicating that Nifty is trading in its over sold zone on intraday chart. **On wednesday Nifty may try to move above 4900 levels. Above 4900 levels Nifty will find resistance at 4910/4934/4950 levels. Below 4900 levels, 4840/4777 will act as short term support zone for Nifty in days to come.**

60 Minute Chart Analysis



14 days Schotestic RSI (60 minutes chart) closed at 0.00 levels & traded across its 9 period EMA for whole of the trading session and managed to close below it. On wednesday it may try to come above its 9 period EMA levels allowing Nifty to trade above 4850/4840 levels.

After testing 4950 levels on first hour of trade, Nifty moved southwards to close below 4900 levels in remaining trading hours. On wednesday Nifty likely to find support around 4840/4810 levels. Probability of short covering before May 12 future expiry is high due to which Nifty may move towards and above 4950 levels.

240 Minute Chart Analysis



Today was 29th day for Nifty in bear zone after 4th day in bull zone for Super Trend, over 240 minutes Heikin Candle.

Today also Nifty sustained and closed below 4950 levels.

Nifty manages to close above 3rd speed line for 2nd consecutive day. Speed line is drawn from the high of 5629.95 (22/02/12) and low of 5136.10 (29/03/12).

In next few 240 minute Heikin candle Nifty have to give close above 2nd speed line to move towards 3rd speed line (around 5100 levels). If it continues closing below 3rd speed line then it will increase probability to slide towards 1st speed line (around 4500 levels).

Note on Nifty Intraday Price,OI & Volume (22/05/2012)

On tuesday fall in Nifty (0.93 %) was registered with rise in Nifty May 12 futures open position (10.00 %) and rise in Nifty spot intraday volume (9.07 %).

Nifty fall with rise in OI and volume suggesting that the downtrend is secure and that the trend may continue for a period of time.

Current fall of 0.93 % in Nifty was due to fresh short build up in Nifty May 12 series.

For wednesday, 4840 levels will continue to act as a crucial support levels. Continuation of sustainability above 4840 levels which is only possible with short covering in May 12 future series along with fresh long build up in June 12 future series, on intraday only will force Nifty to move towards 4950 levels or above. Else, Nifty to test 4810/5777 levels.

Stocks Corner

Fresh Long

HEXAWARE	ABGSHIP	AUROPHARMA	PETRONET	ABB
TATAMOTORS	TECHM	SAIL	APIL	BHEL
ZEEL	BANKBARODA	PFC	RANBAXY	CNXIT
CAIRN	DRREDDY	BPCL	HINDPETRO	LUPIN
CANBK	MCLEODRUSS	ABIRLANUVO	PNB	
OPTOCIRCUITC	JUBLFOOD			

Long Liquidation

TATACOFFEE	GODREJIND	CESC	EXIDEIND	TATAMTRDVR
TVSMOTOR	BEL	VIPIND	DIVISLAB	TATACHEM
WIPRO	JSWSPAT	SRTRANSFIN	HAVELLS	ALOKTEXT
RUCHISOYA	BIOCON	ADANIPTS		BAJAJ-AUTO
JINDALSTEL	BATAINDIA	RENUKA	SOUTHBANK	PIRHEALTH
JETAIRWAYS		ASHOKLEY	SCI	ACC
IDFC	PATELENG	SUNTV	IBREALEST	TTKPRESTIGUNITECH
RAYMOND	MRPL	RELCAPITAL		SIEMENS
KOTAKBANK		RELINFRA	ANDHRABANK	INDIANB
JSWSTEEL	NCC	LITL	PANTALOONR	GUJFLUORO
SYNDIBANK	MCDOWELL-N		HCC	BOMDYEING
CROMPGREAV		SBIN	RPOWER	GVKPIL
STER	IRB	DELTACORP	POLARIS	IDEA

Short Covering

OFSS	ARVIND	HCLTECH	ADANIENT	TCS	OIL
BHUSANSTL	IOC	TITAN	BAJAJHLDNG	DABUR	NHPC
AXISBANK	SUZLON	TATAGLOBAL			
BHARTIARTL	INFY	INDIAINF0			

Fresh Short

RECLTD	BHARATFORG	ORIENTBANK	COREEDUTEC
POWERGRID	MAX	YESBANK	CIPLA
CNPSE	FORTIS	HEROMOTOCO	SINTEX
GRASIM	BOSCHLTD	UNIPHOS	BGREENERGY
NAGAROIL	ROLTA	TTML	UNIONBANK
BAJAJHIND	JINDALSAW	NFTYMCAP50	BRFL
DISHV	GMRINFRA	ICIBANK	JPOWER
CHAMBLFERT		MPHASIS	IOB
NTPC	VIDEOIND	COLPAL	KTKBANK
GMDCLTD	ABAN	AMBUJACEM	CNXINFRA
SOBHA	SKUMARSYNF		ASIANPAINT
ULTRACEMCO		JSWENERGY	ALBK
DENABANK	FINANTECH	IDBI	MRF
UCOBANK	GLAXO	IFCI	PUNJLLOYD
VOLTAS	LT	BALRAMCHIN	INDHOTEL
HINDALCO	STRTECH	LICHSGFIN	CENTURYTEX
APOLLOTYRE		PRAJIND	JPASSOCIAT
CUMMINSIND		DCB	ONMOBILE
CENTRALBK	SESAGOA	TATAPOWER	SREINFRA
			IVRCLINFRA

Performance Corner

Daily Calls Monitor

Buy Nifty May 12 future @ 4927/4934 (spot) sl 4902 tgt 4950/4969; sl triggered in Nifty intraday buy call
Buy Tata Steel @ 406/408 sl 401 tgt 413/415.50
Buy Axis Bank @ 970/973 sl 960 tgt 984/995
Buy Jubilfood @ 1140 sl 1119 tgt 1165/1179
Buy THomasCook @ 62.90/63.20 sl 61.50 tgt 65.00/67.00
Buy Heromotoco @ 1850 sl 1833 tgt 1874/1897
May buy Nifty May 12 future again @ 4880/4887 (spot) sl 4867 tgt 4909/4934; sl of earlier intraday buy call in Nifty triggered
Buy Bank Nifty May 12 future @ 9310/9320 sl 9250 tgt 9410/9490

Buy Copper June 12 future @ 428.00/428.50 sl 425.70 tgt 430.40/431.70; may hold intraday buy in copper for 434
Buy Gold 29020/29050 sl 28920 tgt 29150/29230
Buy Silver July 12 future @ 54100/54200 sl 53700 tgt 54700/54900
Short Natural Gas May 12 future @ 144.50/145 sl 146.70 tgt 142.90/141.10

Analyst Certificate & Disclaimer

DISCLAIMER: The document is not for public distribution and has been furnished solely for information and must not be reproduced or redistributed to others. Opinion expressed is the current opinion as of the date appearing on the material only. Further, the information in the document has been printed on the basis of publicly available information; internal data and other reliable sources believed to be true and are for general guidance only but which may not be verified independently. While every effort is made to ensure the accuracy and completeness of information contained, the company takes no guarantee and assumes no liability for any errors or omissions of the information. No one can use the information as the basis for any claim, demand or cause of action. All investment information and opinion are subject to change without notice. Recipients of this material should rely on their own investigations and take their own professional advice. Each recipient of this document should make such investigations as it deems necessary to arrive at an independent evaluation of an investment in the securities of companies referred to in this document (including the merits and risks involved), and should consult their own advisors to determine the merits and risks of such an investment. This material is for personal information and none is responsible for any loss incurred based upon it. The investments discussed or recommended in this report may not be suitable for all investors. It should not be considered to be or taken as an offer to sell or a solicitation to buy/sell any security. Price and value of the investments referred to in this material may go up or down. Past performance is not a guide for future performance. Certain transactions - futures, options and other derivatives as well as non-investment grade securities - involve substantial risks and are not suitable for all investors. Reports based on technical analysis centers on studying charts of a stock's price movement and trading volume, as opposed to focusing on a company's fundamentals and as such, may not match with a report on company's fundamentals. Analyst who has issued this report, may, on the date of this report, and from time to time, have long or short positions in, and buy or sell the securities of the companies mentioned herein or engage in any other transaction involving such securities and earn brokerage or compensation or act as advisor or have other potential conflict of interest with respect to company/ies mentioned herein or inconsistent with any recommendation and related information and opinions.