

# Daily Nifty Observer

Issue - 671

May 30, 2012

## Nifty Outlook

.....nifty likely to continue to resist around 5020/5050 levels on wednesday.....

## Support

4980/4950/4910

## Resistance

5020/5050/5070

## Market Strength Indicators

14 days RSI - Up by 0.45 points at 47.45 levels

14 days SchRSI - Unchanged at 100 levels

Stochastic - Up by 2.24 points at 86.54 levels

TSI - Up by 3.23 points

## Market Intensity Indicator

NFP - At discount of 8.45 from discount of 10.25 earlier

Advance - 744

Decline - 689

Volatility - Unchanged at 0.16 levels from previous

## Moving Average Indicator

20 days SMA - 4969.41

50 days SMA - 5139.55

200 days SMA - 5070.10

Bollinger Band - Moving towards Middle Band from Below

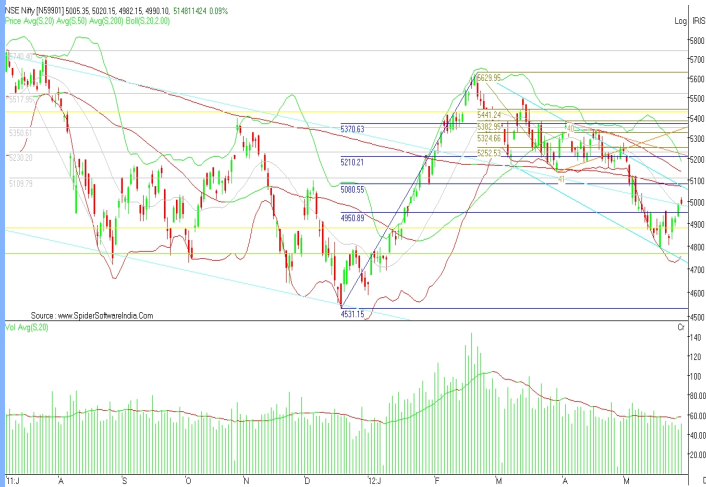
## Other Indicators

FII's Spot - Positive

DII's Spot - Negative

F&O - Positive

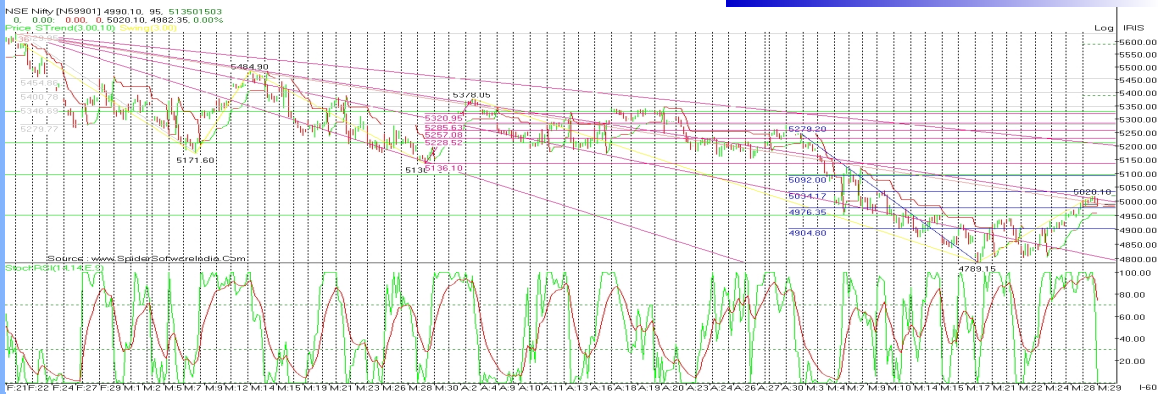
## Spot Nifty Daily Chart Analysis



Spot Nifty closed at 4990.10 up 0.09 % after consolidating trading session with rise in volume which was below its 20 period SMA. It made a high of 5020.15 and low of 4982.15 levels in intraday. Nifty closed above its 20 period, below its 50 periods and even below its 200 periods SMA. SHORT TERM TREND WILL REMAIN BEARISH AS NIFTY CLOSED BELOW ITS 200 DAYS SMA ON MONDAY (07/05/2012). Momentum oscillator is indicating that Nifty is moving towards its over bought zone on intraday chart.

**On wednesday Nifty likely to continue trade above 4910/4950 levels with 4880 levels to continue as major support on daily chart. Below 4980 levels Nifty has immediate support at 4950/4910 levels. Above 4980 levels, Nifty may resist to sustain above 5020/5050 levels.**

## 60 Minute Chart Analysis



14 days Schotestic RSI (60 minutes chart) closed at 0.00 levels & traded across its 9 period EMA for whole of the trading session and managed to close below it. On wednesday it may try to come above its 9 period EMA levels allowing Nifty to trade above 4950/4910 levels.

Today, Nifty resisted at 5020 levels and managed to close below 5000 levels. On wednesday Nifty likely to continue its trade above 4950 levels. Probability to breach 5020 levels to test 5050 levels will be on higher side on intraday.

## 240 Minute Chart Analysis



After 32 day for Nifty in bear zone, today also it closed above Super Trend, over 240 minutes Heikin Candle, giving an indication for short term bull run.

Today also Nifty sustained and closed above 4950 levels.

Nifty for 4th day closed above its 2nd speed line and moved towards 3rd speed line on intraday. Speed line is drawn from the high of 5629.95 (22/02/12) and low of 5136.10 (29/03/12).

**In next few 240 minute Heikin candle Nifty have to give close above 2nd speed line to move towards 3rd speed line (around 5100 levels). If it continues closing below 3rd speed line then it will increase probability to slide towards 1st speed line (around 4500 levels).**

## Note on Nifty Intraday Price,OI & Volume (29/05/2012)

On Tuesday rise in Nifty (0.09 %) was registered with rise in Nifty May 12 futures open position (9.54 %) and rise in Nifty spot intraday volume (13.90 %).

Nifty rise with rise in OI and volume suggesting that the market is attracting larger numbers of trader willing to open positions from the long side and hold them. Traders are more confident that prices will continue to climb up. This scenario indicates for a bullish movement to continue. Current rise of 0.09 % in Nifty was due to fresh long build up in Nifty May 12 series.

**For wednesday, 4980 levels will provide immediate and strong support to Nifty, below which 4950 levels will act as intraday support for intraday. Continuation of trading above 4980 levels will increase the probability of Nifty to trade around or above 5020/5050 levels. Else, it may move below 4980 levels.**

## Stocks Corner

### Fresh Long

|            |            |            |            |                   |
|------------|------------|------------|------------|-------------------|
| SOUTHBANK  | GMDCLTD    | GVKPIL     | HDIL       | PANTALOONR        |
| LITL       | ADANIPTS   |            | SOBHA      | HCLTECH CAIRN     |
| FORTIS     | MARUTI     | JSWSTEEL   | COALINDIA  | RANBAXY           |
| MCLEODRUSS |            | PRAJIND    | ADANIENT   | EDUCOMP RUCHISOYA |
| ASHOKLEY   | WELCORP    | BIOCON     | GODREJIND  | MRF TCS           |
| ABAN       | MCDOWELL-N |            | FEDERALBNK | CNXT              |
| AMBUJACEM  |            | GSPL       | ONGC       | INFY JSWSPAT      |
| DENABANK   | TATASTEEL  | RAYMOND    | UNITECH    | SBIN POWERGRID    |
| BAJAJ-AUTO | BGREENERGY | TATAPOWER  |            | ANDHRABANK        |
| KOTAKBANK  |            | NTPC       | GAIL       | BOMDYEING         |
| HEROMOTOCO |            | ROLTA      | ORIENTBANK | ARVIND            |
| ICICIBANK  | CNXNSE     | BHUSANSTL  | BANKINDIA  | CHAMBLFERT        |
| ZEEL       | APOLLOTYRE |            | SCI        | GMRINFRA DRREDDY  |
| TATAMTRDVR |            | ABIRLANUVO |            | BANKNIFTY NIFTY   |
| BEL        | RELIANCE   | CENTURYTEX |            | BALRAMCHIN        |
| VIJAYABANK |            |            |            |                   |

### Long Liquidation

|            |            |            |                              |
|------------|------------|------------|------------------------------|
| SUNTV      | ABB        | COREEDUTEC | SRTRANSFIN LT                |
| RELINFRA   | HINDUNILVR | LICHSGFIN  | NMDC OPTOCIRCUI              |
| LUPIN      | COLPAL     | TTML       | DLF TECHM AXISBANK           |
| ALOKTEXT   | JPOWER     | PFC        | FINANTECH PATELENG CANBK IGL |
| JPASSOCIAT | ESCORTS    | BHARATFORG |                              |

### Short Covering

|            |           |            |                   |
|------------|-----------|------------|-------------------|
| WIPRO      | SUZLON    | SKUMARSYNF | JETAIRWAYS        |
| OIL        | TATACOMM  | CROMPGREAV | MAX               |
| BANKBARODA |           | HCC        | APIL              |
| INDIAINFO  | GUJFLUORO | ASIANPAINT | BHEL              |
| NHPC       | M&M       | JINDALSTEL | RENUKA            |
| PNB        |           |            | YESBANK BAJAJHIND |

### Fresh Short

|            |           |            |            |            |            |
|------------|-----------|------------|------------|------------|------------|
| INDUSINDBK | CNXINFRA  | UNIPOS     | SREINFRA   | BFUTILITIE | TATAMOTORS |
| POLARIS    | HINDALCO  | SAIL       | ULTRACEMCO |            | DABUR      |
| IDBI       | ABGSHIP   | BOSCHLTD   | JSWENERGY  | HDFC       | SUNPHARMA  |
| NFTYMCA50  |           | HEXAWARE   | IOB        | HDFCBANK   | BHARTIARTL |
| NAGAROIL   | HINDPETRO | ADANIPOWER |            | CESC       | STER       |
| TATAGLOBAL |           | MPHASIS    | CIPLA      | GRASIM     | SIEMENS    |
| DISHTV     | MRPL      | ALBK       | HINDZINC   | MTNL       | INDHOTEL   |
| IDEA       | UNIONBANK | BPCL       | VIDEOIND   | KTKBANK    | IVRCLINFRA |
| ONMOBILE   | BEL       | AUROPHARMA |            |            |            |

## Performance Corner

### Daily Calls Monitor

[Buy Reliance @ 698/703 sl 691 tgt 709/717](#)  
[Buy Tata Steel @ 414/412 sl 408 tgt 417/423](#)  
[Buy Jubilfood @ 1320/1327 sl 1302 tgt 1350/1367](#)  
[Buy Nifty June 12 future @ 4995/5000 \(spot\) sl 4979 tgt 5027/5045](#)  
[Buy Jindalsteel @ 457/460 sl 451 tgt 467/475](#)  
[Buy Maruti @ 1125/1130 sl 1112 tgt 1149/1162](#)  
[Buy SBI @ 2120/2127 sl 2107 tgt 2149/2161](#)  
[Buy Sail @ 95.50 sl 93.90 tgt 97.00/98.50](#)

[Buy Copper June 12 future @ 426.90/427.30 sl 424.90 tgt 429.10/430.50; 2nd tgt](#)  
[Buy Silver July 12 future @ 54500/54600 sl 54100 tgt 54900/55250](#)  
[Buy Crude June 12 future @ 5087/5095 sl 5072 tgt 5119/5135](#)  
[Buy Gold June 12 future @ 29070/29090 sl 28970 tgt 29170/29240](#)  
[May buy copper June 12 future again @ 430.00/430.50 sl 428.70 tgt 433.00/434.50; 2nd tgt of earlier intraday buy call in copper achieved](#)

## Analyst Certificate & Disclaimer

**DISCLAIMER:** The document is not for public distribution and has been furnished solely for information and must not be reproduced or redistributed to others. Opinion expressed is the current opinion as of the date appearing on the material only. Further, the information in the document has been printed on the basis of publicly available information; internal data and other reliable sources believed to be true and are for general guidance only but which may not be verified independently. While every effort is made to ensure the accuracy and completeness of information contained, the company takes no guarantee and assumes no liability for any errors or omissions of the information. No one can use the information as the basis for any claim, demand or cause of action. All investment information and opinion are subject to change without notice. Recipients of this material should rely on their own investigations and take their own professional advice. Each recipient of this document should make such investigations as it deems necessary to arrive at an independent evaluation of an investment in the securities of companies referred to in this document (including the merits and risks involved), and should consult their own advisors to determine the merits and risks of such an investment. This material is for personal information and none is responsible for any loss incurred based upon it. The investments discussed or recommended in this report may not be suitable for all investors. It should not be considered to be or taken as an offer to sell or a solicitation to buy/sell any security. Price and value of the investments referred to in this material may go up or down. Past performance is not a guide for future performance. Certain transactions - futures, options and other derivatives as well as non-investment grade securities - involve substantial risks and are not suitable for all investors. Reports based on technical analysis centers on studying charts of a stock's price movement and trading volume, as opposed to focusing on a company's fundamentals and as such, may not match with a report on company's fundamentals. Analyst who has issued this report, may, on the date of this report, and from time to time, have long or short positions in, and buy or sell the securities of the companies mentioned herein or engage in any other transaction involving such securities and earn brokerage or compensation or act as advisor or have other potential conflict of interest with respect to company/ies mentioned herein or inconsistent with any recommendation and related information and opinions.